

SP Range Pluggable SPD for 4/20mA Signals



Part No. SP30

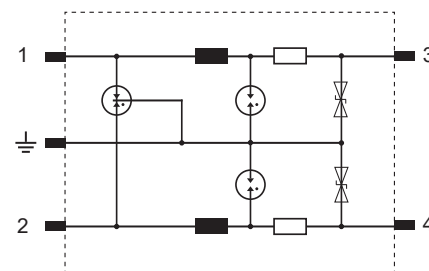
| | | |
|--|------------------|--|
| Type | | SP30 |
| Nominal voltage | U _n | 30V- |
| Rated voltage (max. operating voltage) | U _c | 35V- 25V~ |
| Nominal current | I _L | 1A |
| Lightning discharge current (10/350) | I _{imp} | 4kA (per line) 10kA (total) |
| Nominal discharge current (8/20) | I _n | 10kA (per line) 20kA (total) |
| Voltage protection level at I _{imp} | U _p | ≤130V (line-line) ≤80V (line-line) |
| Response time | t _A | ≤1ns (line-line) ≤1ns (line-PG) |
| Bandwidth | f _G | 5.1MHz (AD-PG) |
| Series impedance per line | R | 2.2Ω |
| Capacitance | C | ≤0.3nF (line-line) ≤0.6nF (line-PG) |
| Operating temperature range | | -40°C...+80°C |
| Cross-sectional area | | Max. 2.5mm ² flexible |
| Mounting on | | 35mm DIN rail |
| Enclosure material | | Yellow thermoplastic, UL94-V0 |
| Test standards | | IEC 61643-21; GB 18802.21; YD/T 1542 |
| Certification | | CE (LVD, EMC) |

- Combined arrester handles Lightning & Surges
- Designed to protect measuring and control circuits, bus systems or telecommunication systems
- High discharge current 20kA at 8/20µs
- Extremely low voltage protection level
- Pluggable replacement modules
- Din rail mountable device with integrated earthing
- Slim, space-saving device
- Easy to install
- Range of voltages available to suit all installations



Part No. SP48

| | | |
|--|------------------|--|
| Type | | SP48 |
| Nominal voltage | U _n | 48V- |
| Rated voltage (max. operating voltage) | U _c | 55V- 39V~ |
| Nominal current | I _L | 1A |
| Lightning discharge current (10/350) | I _{imp} | 4kA (per line) 10kA (total) |
| Nominal discharge current (8/20) | I _n | 10kA (per line) 20kA (total) |
| Voltage protection level at I _{imp} | U _p | ≤150V (line-line) ≤90V (line-line) |
| Response time | t _A | ≤1ns (line-line) ≤1ns (line-PG) |
| Bandwidth | f _G | 8.5MHz (AD-PG) |
| Series impedance per line | R | 2.2Ω |
| Capacitance | C | ≤0.3nF (line-line) ≤0.6nF (line-PG) |
| Operating temperature range | | -40°C...+80°C |
| Cross-sectional area | | Max. 2.5mm ² flexible |
| Mounting on | | 35mm DIN rail |
| Enclosure material | | Yellow thermoplastic, UL94-V0 |
| Test standards | | IEC 61643-21; GB 18802.21; YD/T 1542 |
| Certification | | CE (LVD, EMC) |



Also available in different voltages from 5V-110V